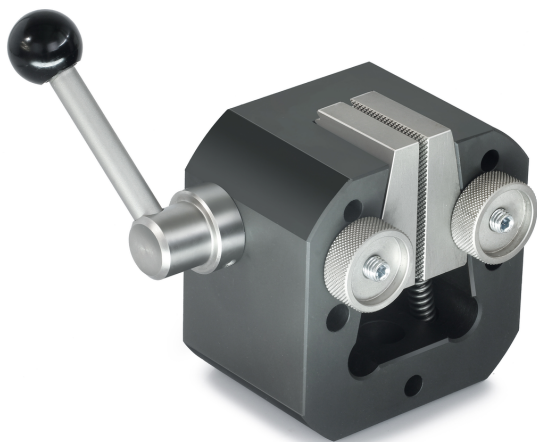


KERN AD 0096

KERN

Wedge tension clamp 50 kN, steel



Category

Brand	Sauter
Product category	Clamp
Product group	Wedge Clamp

Construction

Dimension housing (W×D×H)	170×108×96 mm
Dimensions completely mounted (W×D×H)	170×108×96 mm
Material	steel
Material display housing	steel, phosphated
Tensile/compressive force [Max]	50 kN
Maximum clamp width	50 mm
Clamping width	13 mm

Environmental conditions

Storage temperature [Min]	-10 °C
Storage temperature [Max]	40 °C

Packing & Shipping

Readability force [d] (N)	14 d
Dimensions packaging (W×D×H)	170×108×96 mm
Net weight	6,8 kg
Shipping method	Parcel service
Net weight approx.	7 kg
Gross weight approx.	7 kg
Shipping weight	6,8 kg

Pictograms